



UNIVERSITY OF  
TORONTO



Trillium  
Health Partners  
Better Together



Mississauga Academy of Medicine  
UNIVERSITY OF TORONTO

# Mississauga Update

G. Bandiera,  
ADPGMEAECOSTMMEATTCEO

PGMEAC January, 2014

# Update Framework

- Why now
- Why me
- What now
- What next

# MAM



UNIVERSITY OF  
**TORONTO**

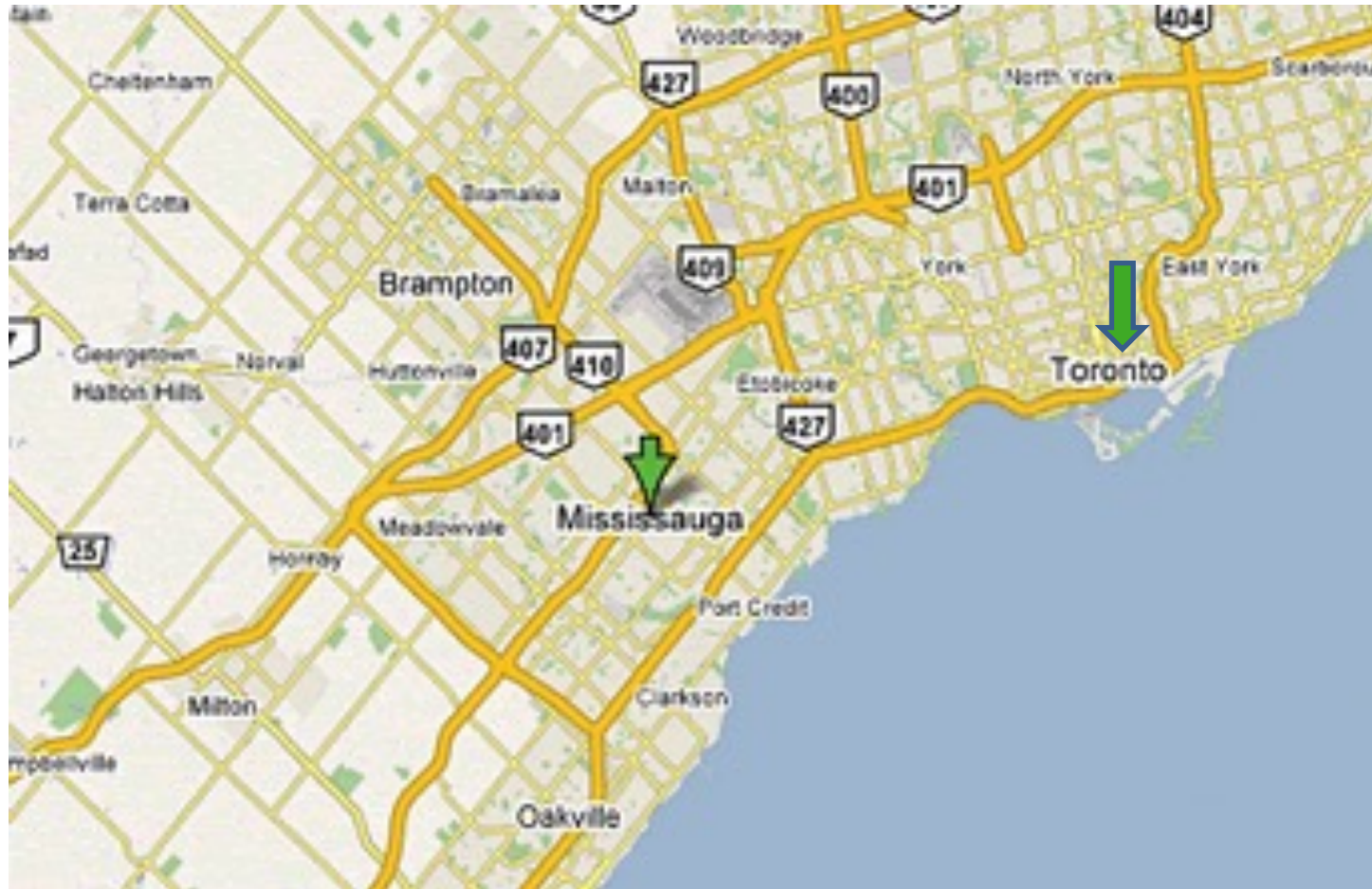


Trillium  
Health Partners  
Better Together



Mississauga Academy of Medicine  
**UNIVERSITY OF TORONTO**

# MAM



UNIVERSITY OF  
**TORONTO**

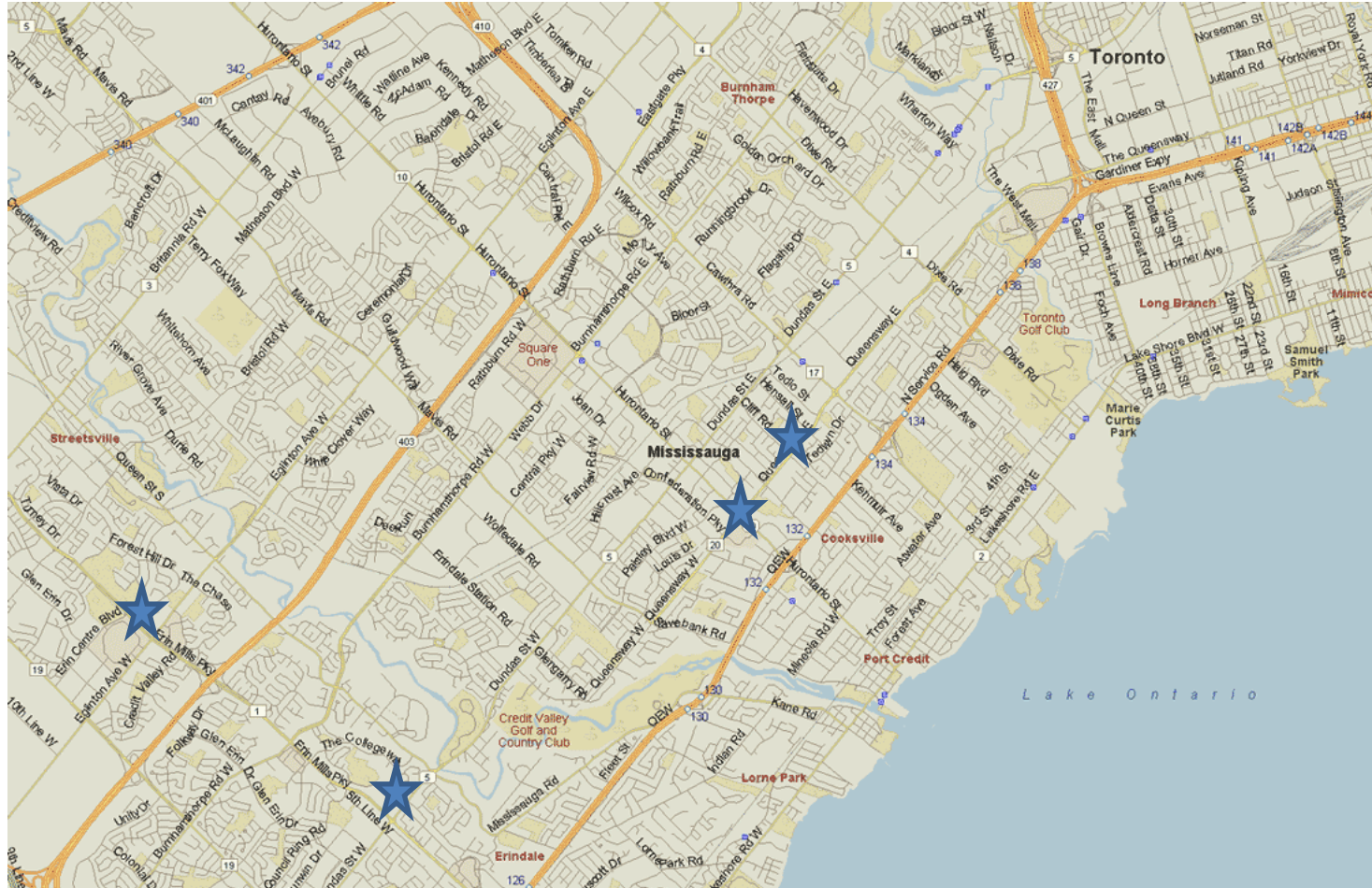


Trillium  
Health Partners  
Better Together



Mississauga Academy of Medicine  
**UNIVERSITY OF TORONTO**

# MAM



UNIVERSITY OF  
**TORONTO**



**Trillium  
Health Partners**  
Better Together

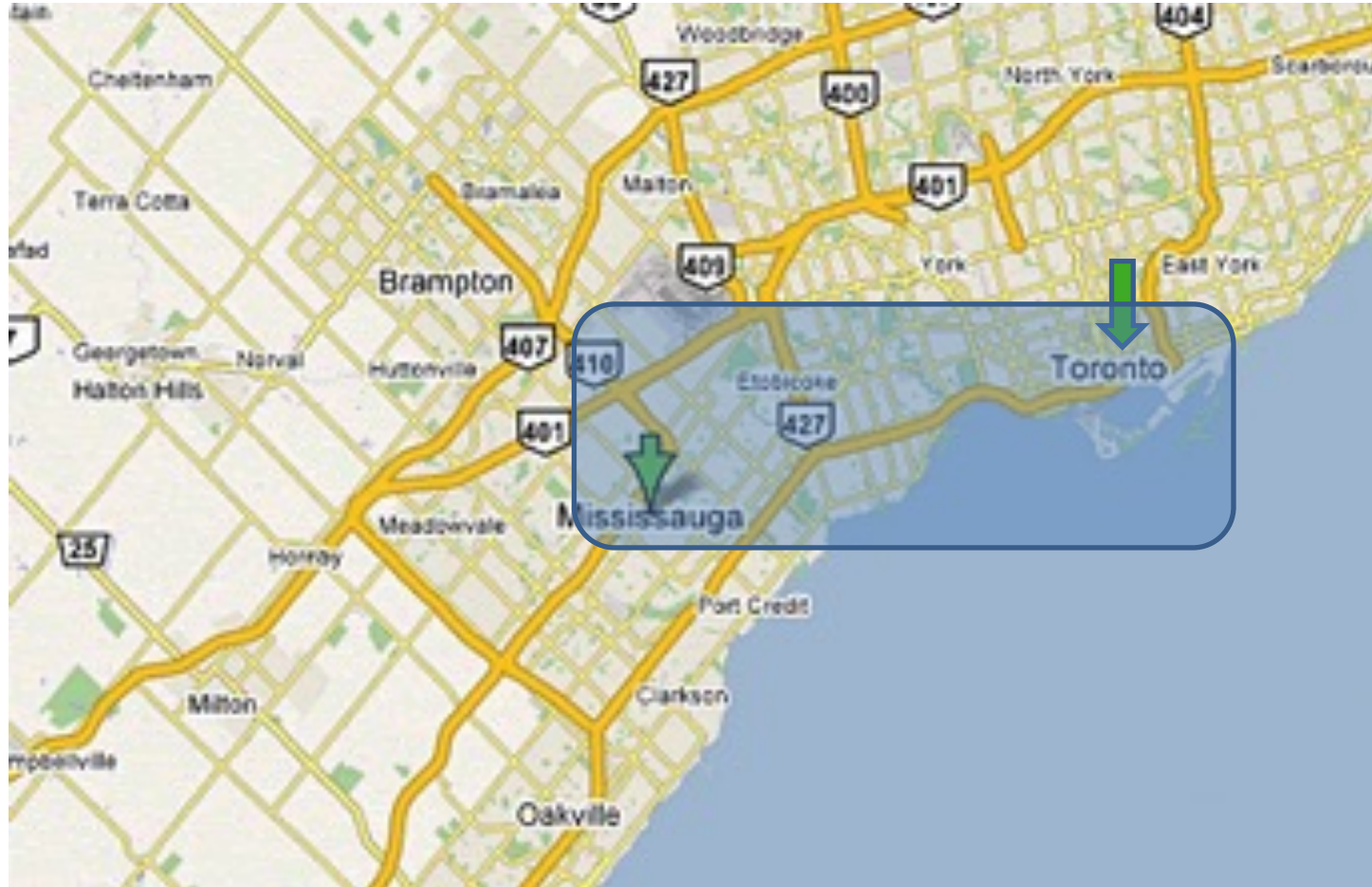


Mississauga Academy of Medicine  
**UNIVERSITY OF TORONTO**

# U of T Faculty of Medicine



# MAM



UNIVERSITY OF  
**TORONTO**



Trillium  
Health Partners  
Better Together



Mississauga Academy of Medicine  
**UNIVERSITY OF TORONTO**

# Mississauga

- 1.15 Million People
  - 38% of people have no family physician
  - 50+ languages
  - 70% children, seniors, CCD
  - Fastest growing metropolitan area in Canada
  - Physician resource pressure (primary care, specialists)



# MAM

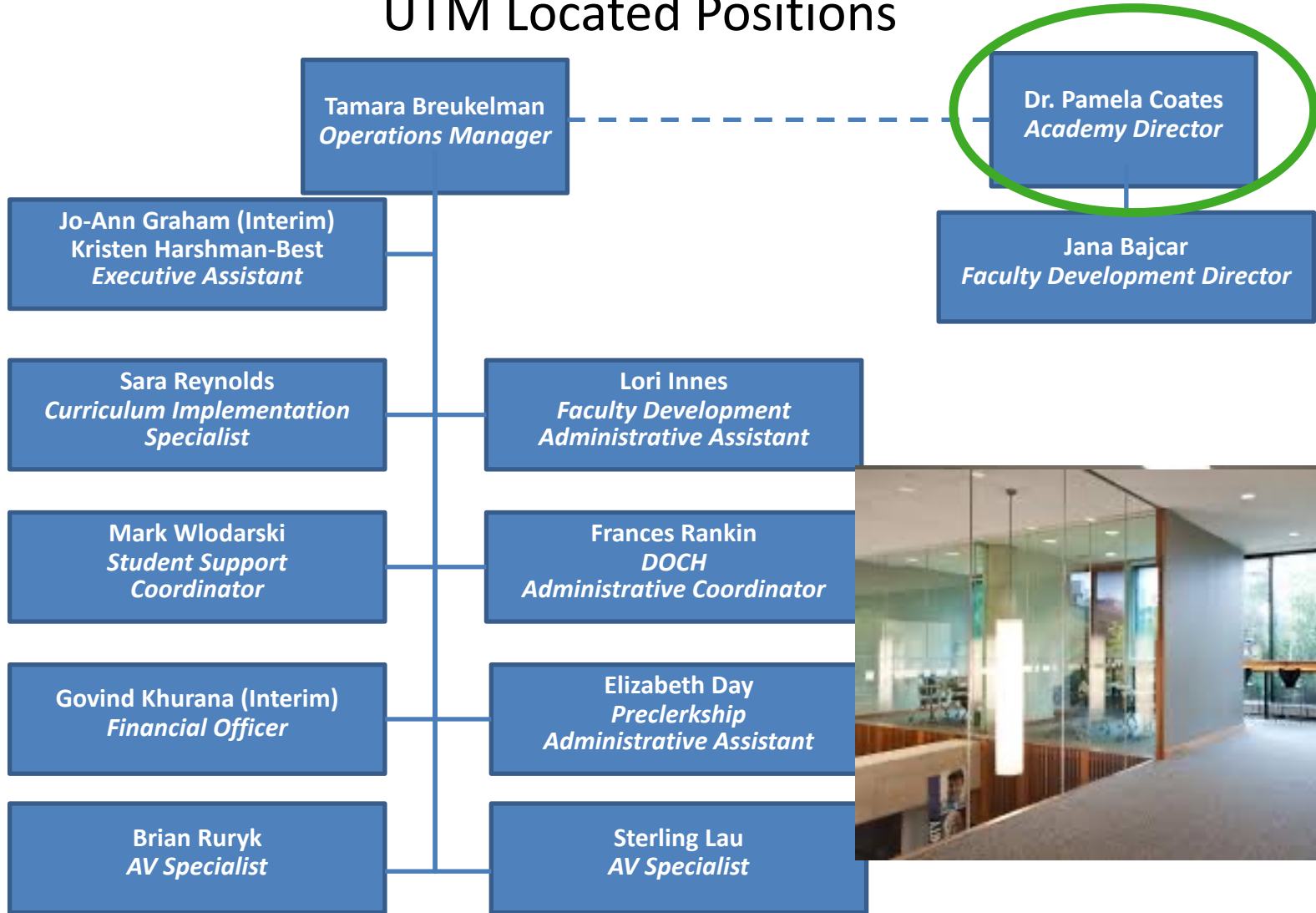
- 54 Students per year
  - 216 at steady state
- Currently 93 FTE PGME trainees
  - Planned 302 steady state (2020)
- Priority areas
  - Generalist specialties

# Trillium Health Partners

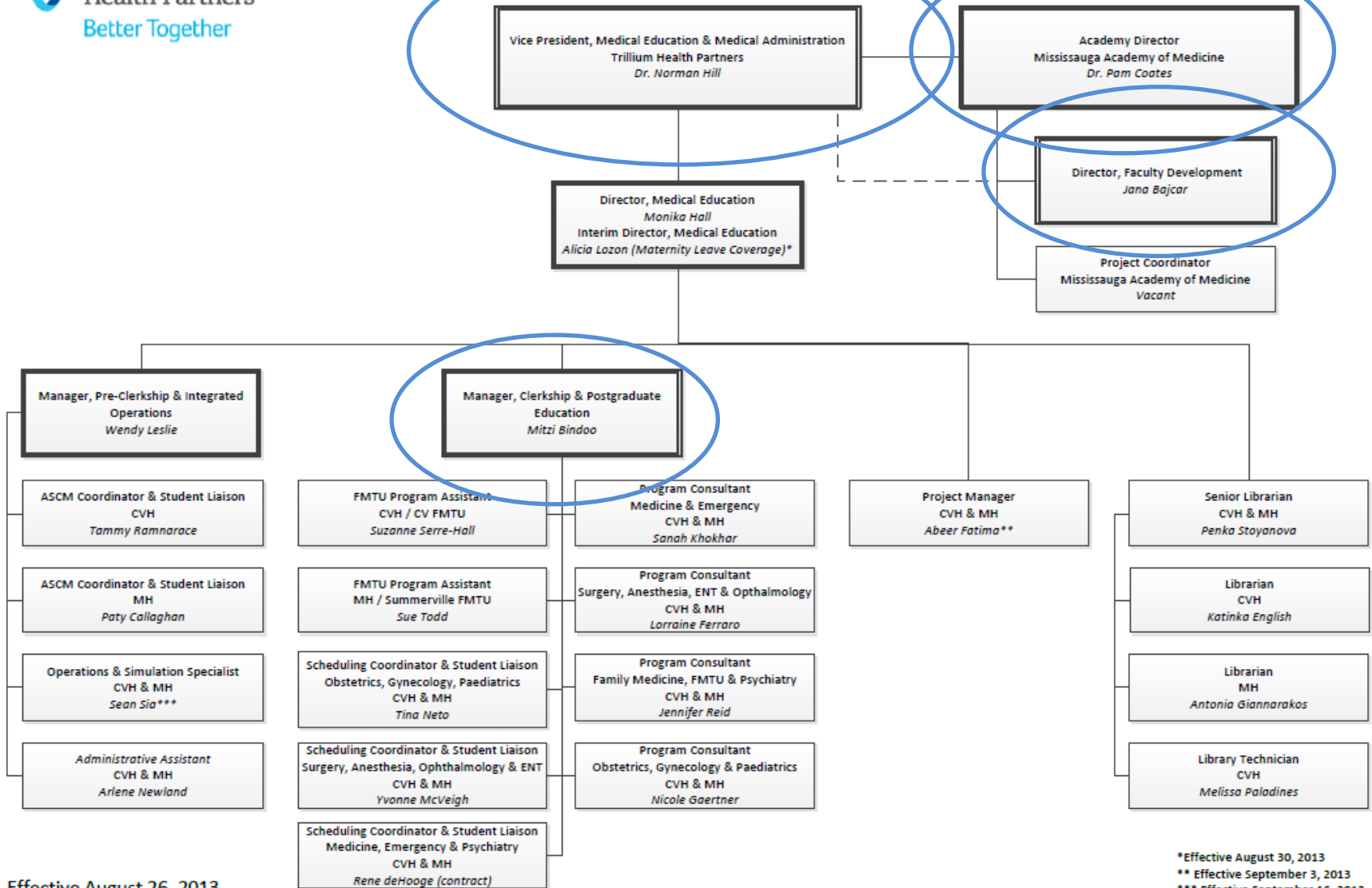
- 1 500 000 patient visits (466 631 SMH)
- 52 000 admissions (26 000 SMH)
- 207 010 ED visits (97 000 UHN, 73 000 SMH)
- 1200 Physicians (695 UHN, 713 SMH)
- 8000 employees
- 1200+ beds (1190 UHN, 465 SMH)
- \$915 000 000 annual budget

# Mississauga Academy of Medicine

## UTM Located Positions



## Medical Education Office & Library Organizational Structure



Effective August 26, 2013

\* Effective August 30, 2013  
 \*\* Effective September 3, 2013  
 \*\*\* Effective September 16, 2013

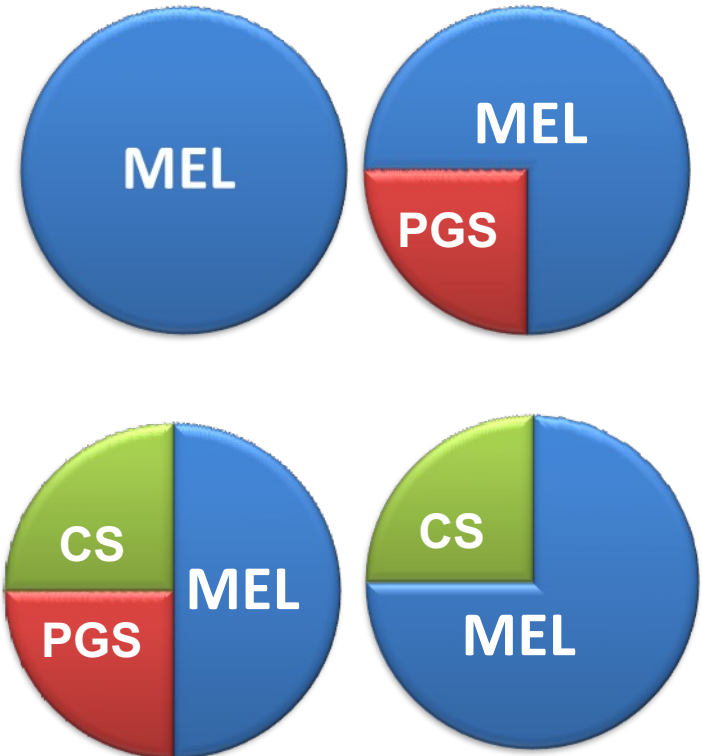
# Medical Education

## Formal Leadership Roles



- Physician Education Leads (PEL) are physicians at Trillium Health Partners who have taken on a formal leadership role in medical education
- Hospital departments were given the opportunity to use a leadership structure that would best meet their overall program needs

<b>Medical Education Lead (MEL)</b>	Responsible for overall direction, management and quality assurance of medical education teaching program within department/service
<b>Clerkship Supervisor (CS)</b>	Responsible for overall direction, management and evaluation of clerkship program within department/service
<b>Postgraduate Residency Supervisor (PGS)</b>	Responsible for overall direction, management and evaluation of the Postgraduate Family Practice and Specialty program within department/service



# THP Strat Plan

- Practical and applied research
- Testing of solutions
- Interprofessional
- Community-based

Quality Improvement  
Interprofessional Practice  
Community-Based Care



UNIVERSITY OF  
TORONTO



Trillium  
Health Partners  
Better Together



Mississauga Academy of Medicine  
UNIVERSITY OF TORONTO

# Learner Feedback

- Travel is a hassle
- The teaching and reception within the hospital is great
- A hands-on practical learning experience
- High patient to learner ratio
- Significant staff interaction
- Focus on high volume, community based experience

# My focus

- Medical Education Organizational Structure
- Relationship management – three partners
  - New players
  - Phenomenal amount of change
- Clerkship operations
- Clerkship capacity
- Postgraduate expansion
  - Value statement
  - Sustainability model
  - Education leadership structure
  - Opportunities for innovation





# Questions?

[Bandierag@smh.ca](mailto:Bandierag@smh.ca)