

Rotation Scheduling and Assessment/Evaluation in Eentra – Pilot Project

PGMEAC, February 28, 2020

A Joint Project of MD Program, PostMD & Discovery Commons

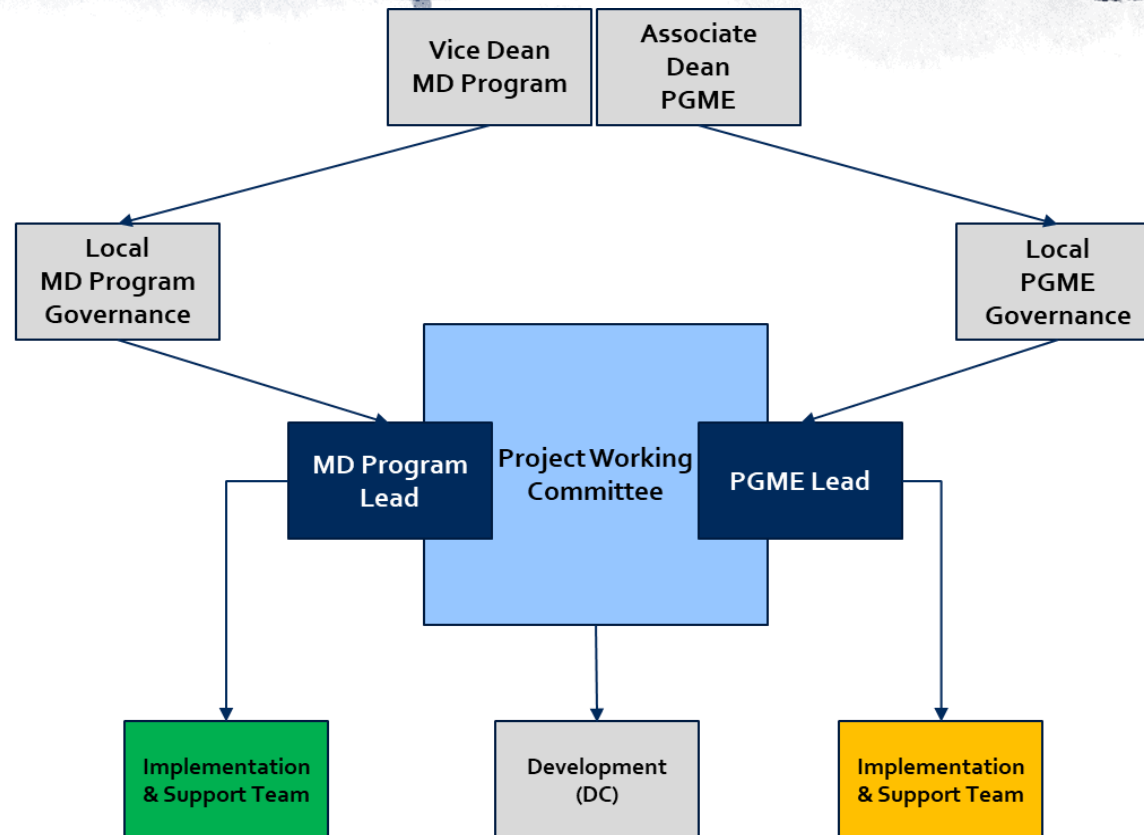
Background

- March 2019 – Strategic decision by FoM to adopt **Elentra for Assessment and Evaluation**
- **Rotation scheduling** is a key dependency for assessments and evaluation.
- Since September 2019, a **working group** comprised of MD, PostMD and DC staff have developed **business requirements for rotation scheduling and assessments/evaluations.**

Pilot Project

- Working with **DFCM and Obs/Gyn**
- Create a **common experience** across the continuum for learners, faculty and staff,
- PostMD currently uses **Elentra for CBME**.
- MD uses **Elentra for learning management system (LMS)** and **curriculum mapping**, but will eventually use Elentra for workplace based assessments (WBA's).

Project Governance



The Pilot – what's involved

- Rotation Scheduling
- Clerkship Assessment
- ITARs, Progress Reports, etc.
- Standardized Teacher Assessments (new) including links to learner mistreatment and professionalism reports.
- Rotation Evaluations
- Will feature both on-demand and scheduled assessments/evaluations.

Pilot Project Plan Timelines (tentative)

Task	Start
Project Kick-off	February 25, 2020
System Demo with pilot departments	March 10
Training of Program Administrators and others	March through June
Identification of Any Required Adjustments/Feedback	March through April
Setting up rotations for programs by PGME/MD	April
PAs book learners with assistance as required	April and May
Create Assessments and Evaluations for Rotations	May and June
Go-Live Support	Starting June/July

Questions/Discussion

