



Update for PGMEAC

Nov 28, 2024

Sinai Health System

Mount Sinai Hospital

Hennick Bridgepoint Hospital



Service

Humanity

Inclusivity

Discovery



Education Structure

- Education Excellence Committee
 - Learner Management Committee
 - Postgraduate Education Committee
 - Surgical Skills Centre
 - Sim Sinai Centre
 - Cooper Education Centre
 - HBH Academic Office
-
- Education Excellence Awards
 - Wightman-Berris Awards



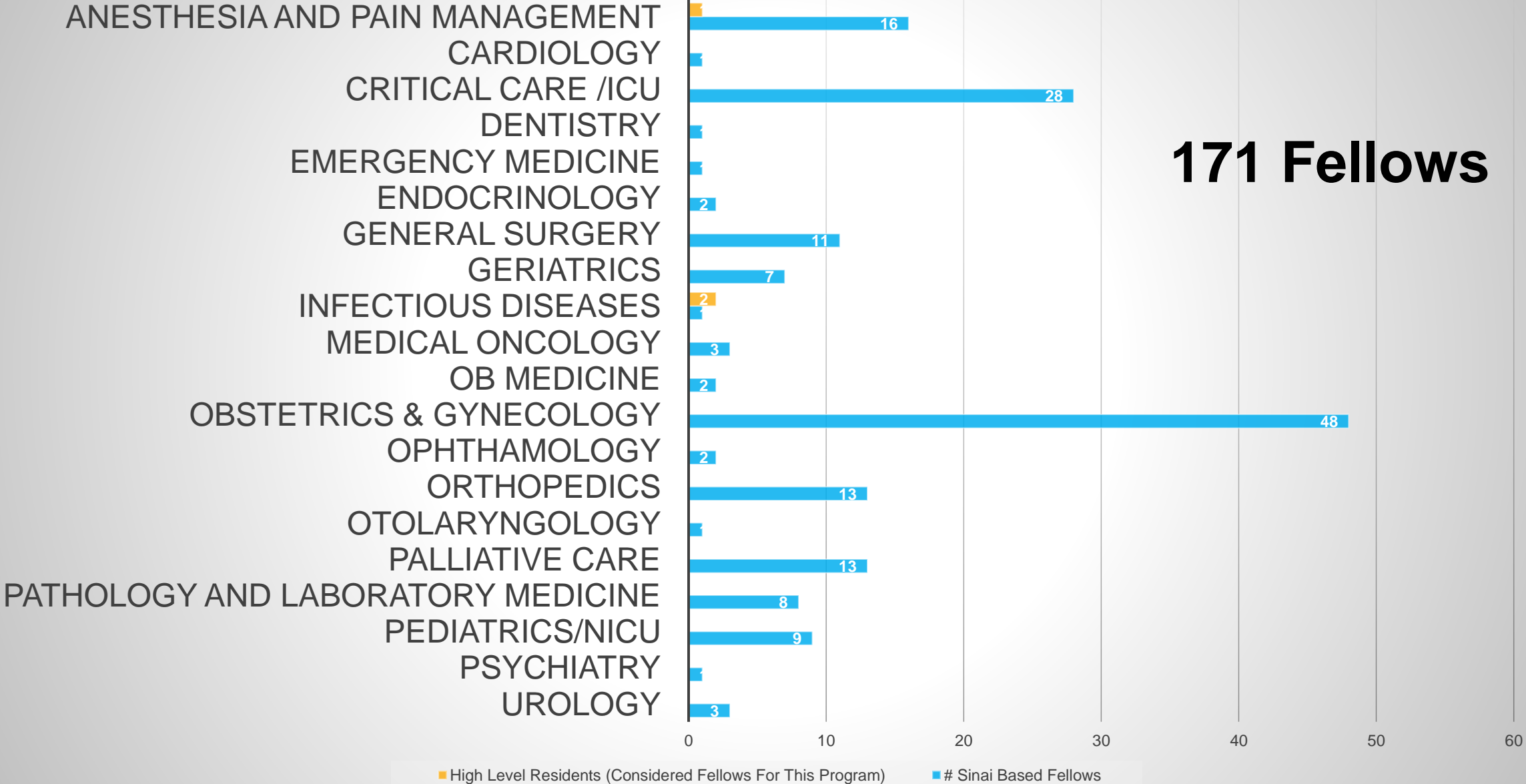
Numbers of Learners - Total > 4000



- **Medicine** (MD, Residents, Fellows) 2817 (Share-UHN)
- **Nursing** (Undergrad, Postgrad, Masters) 1030
- **Anesthesia Assistant** 6
- **Applied Health** (Genetics, Med Lab, Nuclear Medicine, Radiology, Ultrasound) 27
- **Chiropractic** 19
- **Clinical Nutrition** 5
- **Dentistry** (Undergraduates, Residents) 248
- **Midwifery** 18
- **Occupational Therapy** 19
- **Occupational Therapy/Physical Therapy Assistants** 8
- **Physical Therapy** 25
- **Pharmacy** 4
- **Respiratory Therapy** 22
- **Social Work** 9
- **Speech Language Pathology** 6
- **Spiritual Care** 3
- **Therapeutic Recreation** 6

Sinai Fellows Program Distribution

171 Fellows



Postgraduate Committee

- Review Teaching, Rotation performance
- Share successes/challenges
- Respond to accreditation concerns
- Resident/fellow experience
- Plan quality improvement
- Support wellness initiatives
- Share hospital system changes affecting medical learners



Hospital	2022-23 RES		2022-23 TES		Difference Between Mean TES and Mean RES By Site
	Mean	# Eval	Mean	# Eval	
Baycrest	4.52	79	4.72	93	0.20
Bloorview	4.32	50	4.75	57	0.43
BPH	4.59	46	4.80	54	0.21
CAMH	4.23	556	4.63	668	0.40
HRH	4.57	76	4.67	82	0.10
HSC	4.03	1657	4.59	2088	0.56
LRH	4.44	52	4.67	46	0.23
MSH	4.06	1965	4.56	2313	0.50
NYGH	4.35	623	4.66	808	0.31
Oak Valley	4.39	265	4.61	321	0.23
OSCMHS	4.50	8	4.67	9	0.17
RVH	4.29	239	4.53	253	0.24
SHN	4.48	316	4.71	338	0.23
SHSC	4.20	2398	4.64	3191	0.44
SJHC	4.18	440	4.61	619	0.44
SMH	4.28	2335	4.67	3089	0.39
<i>Unity Health Total</i>	<i>4.27</i>	<i>2789</i>	<i>4.66</i>	<i>3722</i>	<i>0.40</i>
SRHC	4.14	237	4.50	240	0.36
TEHN	4.13	591	4.59	789	0.45
CVH	4.15	369	4.49	414	0.34
TMH	4.08	252	4.56	272	0.49
<i>THP Total</i>	<i>4.12</i>	<i>626</i>	<i>4.52</i>	<i>691</i>	<i>0.40</i>
PM	4.17	435	4.60	460	0.43
TG	4.25	1598	4.64	1982	0.39
TR	4.16	96	4.66	96	0.50
TW	4.17	1463	4.66	1812	0.49
<i>UHN Total</i>	<i>4.21</i>	<i>3592</i>	<i>4.65</i>	<i>4350</i>	<i>0.44</i>
WCH	4.35	591	4.64	758	0.28
WOHS	4.26	23	4.74	19	0.48
WPHCYC	4.50	8	4.70	10	0.20
Mean of All Evaluations	4.20	17109	4.62	21213	0.42

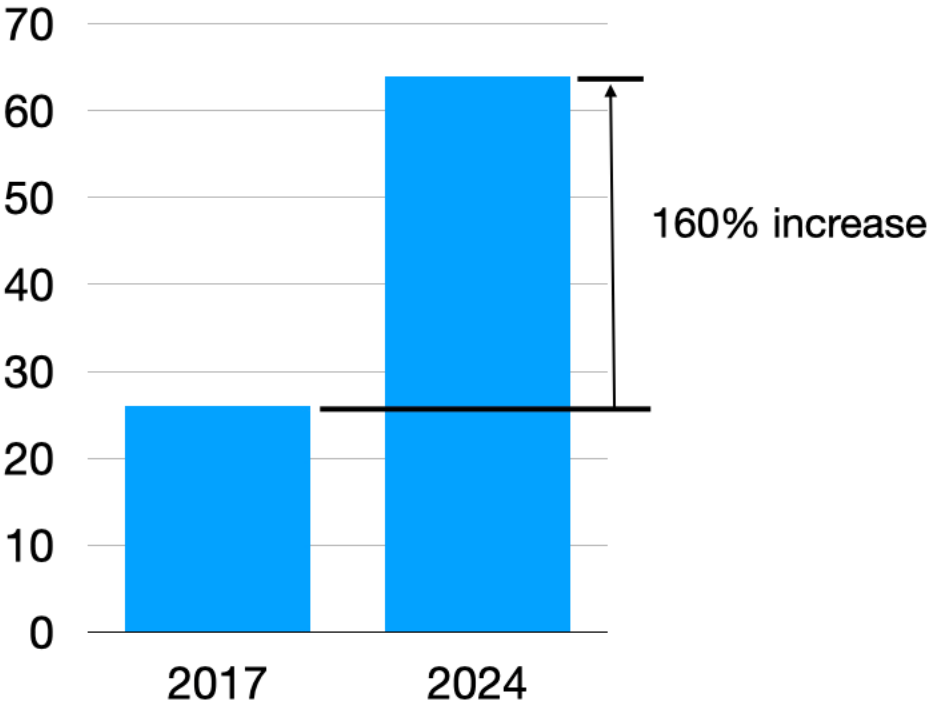


2022-23 RES TES

TAHSN Learner Experience

Hennick Bridgepoint Hospital - "Small but mighty"

Quantity



Quality

One of the highest per capita concentration of teaching award winners at U of T

Consistent Leader in TES-RES at U of T



System/Facilities Improvements

- Onboarding- Nirvsystem
- Updated Orientation Video
- WIFI – Dedicated MSH and BHLearner
- Call Rooms/Lounge spaces
- Observership Policy
- MD Documentation on POWERCHART
- Libraries
- Online Resources
- Renew Sinai



SCHWARTZ / REISMAN EMERGENCY CENTRE



Operating Rooms 12 now 17! Robotics

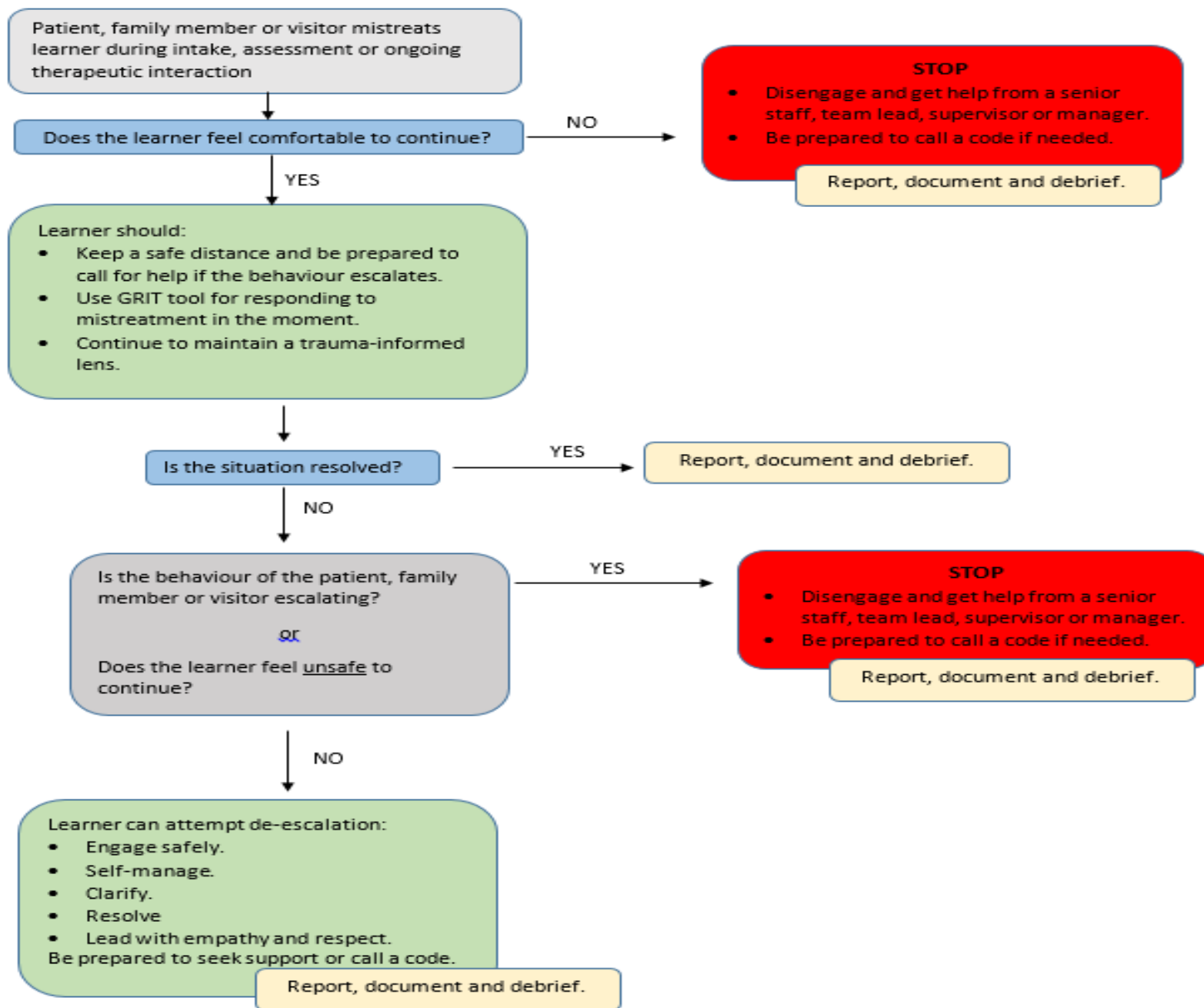
ICU



Surgical Skills Centre

SimSinai





Patients, Families, Visitors flow sheet

Scenario 2 – Clearly mistreatment

Questions?

