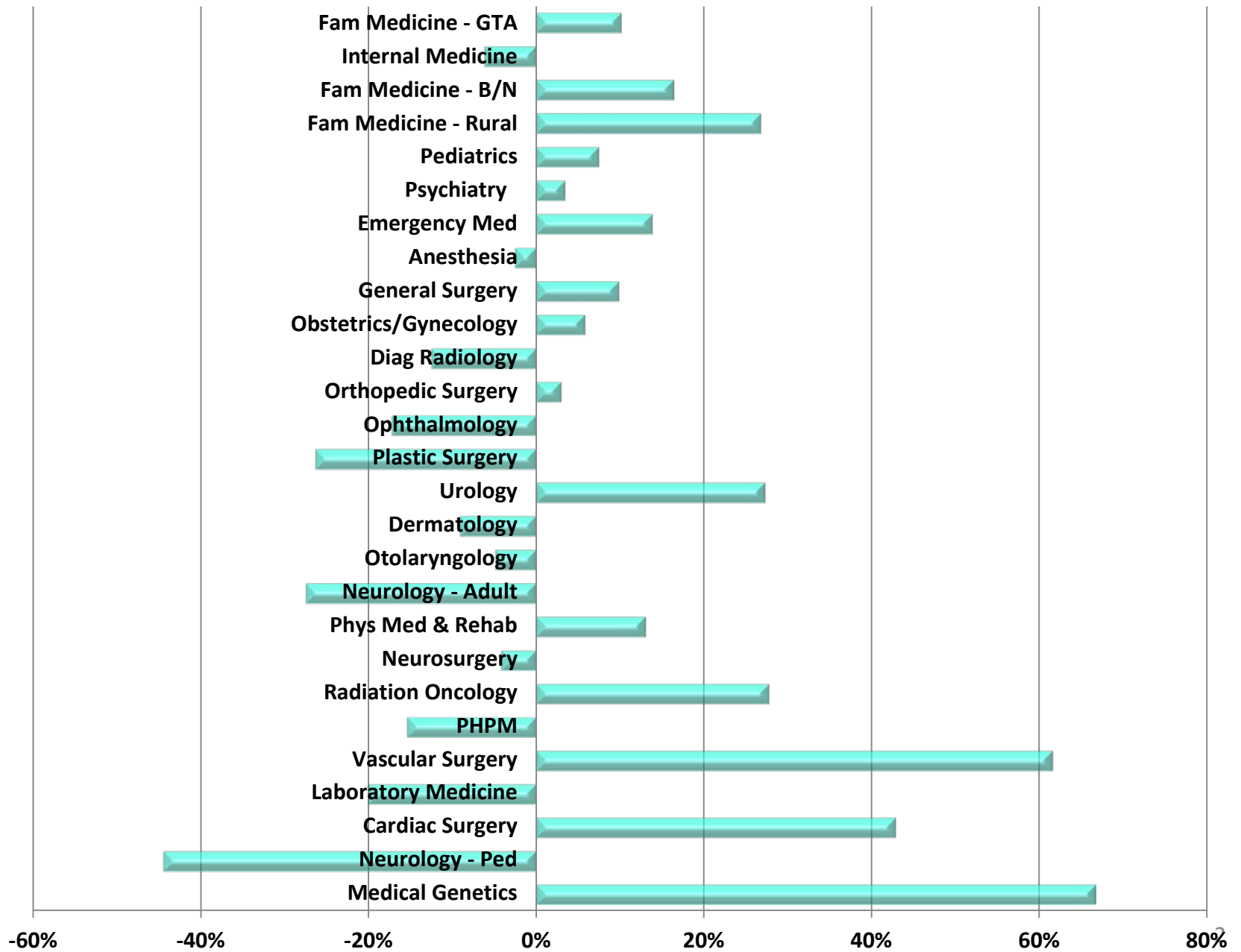
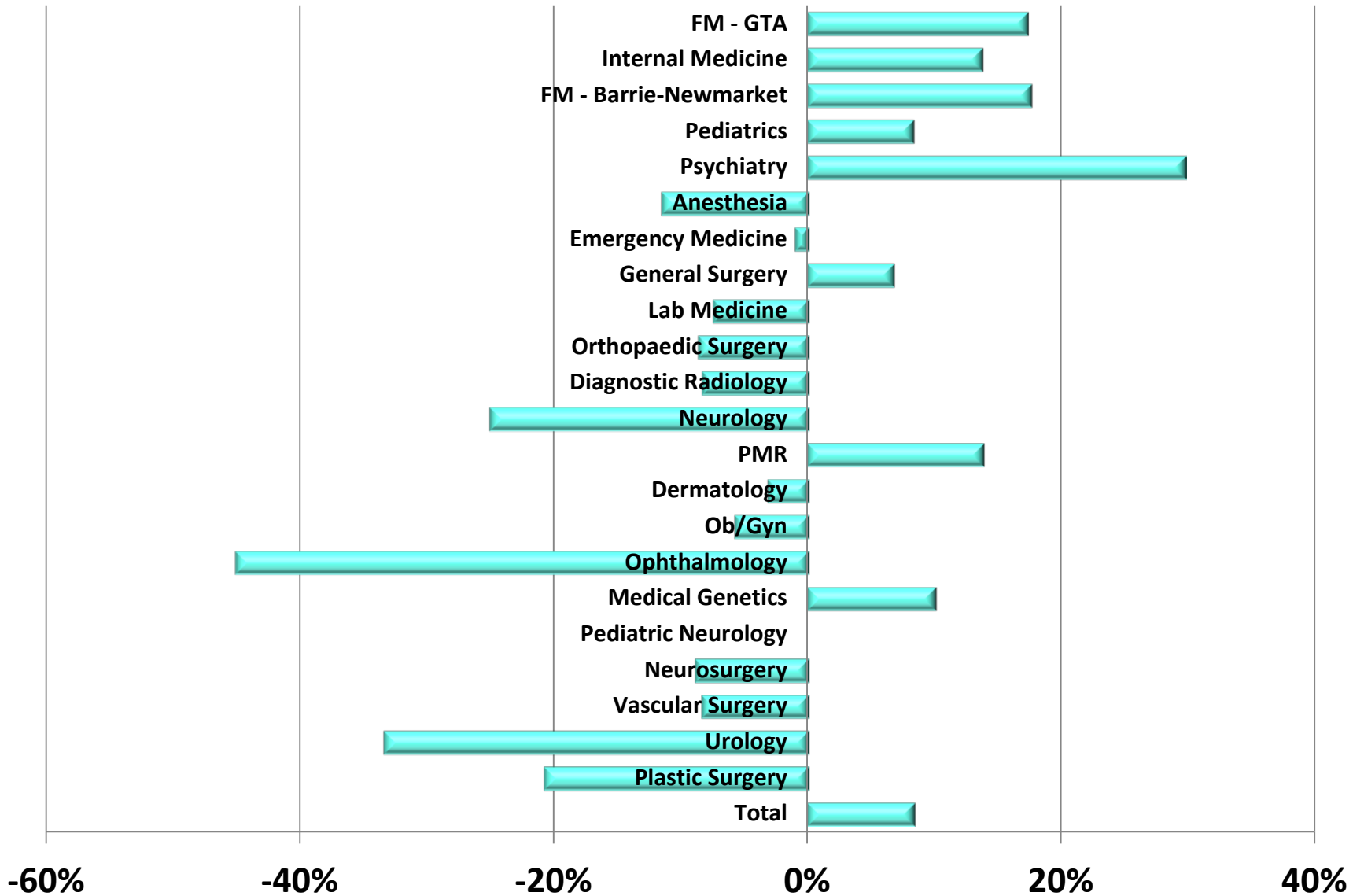


# CaRMS Applications 2013

# % Change in CMG CaRMS Applications (2013 vs. 2012)



## % Change in IMG CaRMS Applications (2013 vs. 2012)



# 7 Year Trends Represented by “Sparklines”

- Sparklines are small graphical representations, typically drawn without axes or co-ordinates. They represent the general shape of a variation over time in a simple and condensed way. (Tufte, E. **Beautiful Evidence**, Graphics Press, 2006). Additional information can be found at this hyperlink: [Sparklines](#)
- The following tables represent the number of applications received for each of the identified programs in each of the 7 years, 2007 to 2013 inclusive.
- The bars represent the total number of applications each year and the relative changes in the number of applications by residency program.
- The size of the bars are relative to the number of applications in any given year for each program.

# 7-Year Trend in Applications by Program

Program	2013 Quota	2007 - 2013 Applications
Fam Medicine - GTA	115	
Internal Medicine	54	
Psychiatry	27	
Pediatrics	17	
Fam Medicine - B/N	14	
Anesthesia	13	
General Surgery	12	
Obstetrics/Gynecolog	11	
Orthopedic Surgery	10	
Diag Radiology	9	
Fam Medicine - Rural	8	
Emergency Med	8	

# 7-Year Trend in Applications by Program

Program	2013 Quota	2007 - 2013 Applications
Dermatology	6	
Otolaryngology	5	
Neurology - Adult	5	
Laboratory Medicine	5	
Ophthalmology	4	
Plastic Surgery	4	
Urology	4	
Neurosurgery	4	
Radiation Oncology	4	
PHPM	4	
Phys Med & Rehab	3	
Cardiac Surgery	1	
Neurology - Ped	1	
Medical Genetics	1	

# COFM PG Planning Working Group: High and Low Need Specialties

		Future Projections		
		ADIN - Base 2010	NBM - Base 2009	OHIP Utilization - Base 2010
TOP 10*	1	General Pathology	Psychiatry	Cardiology
	2	Cardiac Surgery	Cardiology	Psychiatry
	3	Psychiatry	Rheumatology	Cardiac Surgery
	4	Cardiology	Neurology	General Pathology
	5	Anesthesia	Medical Oncology	Nephrology
	6	Otolaryngology	Endocrinology	Rheumatology
	7	Nephrology	Respirology	Medical Biochemistry
	8	General Internal Medicine	Urology	Otolaryngology
	9	Urology	Otolaryngology	Urology
	10	Respirology	Physical Medicine & Rehab	Internal Medicine
BOTTOM 10*	1	Radiation Oncology	Radiation Oncology	Thoracic Surgery
	2	Gastroenterology	Anaesthesia	Obstetrics & Gynecology
	3	Clinical Immunology & Allergy	Gastroenterology	Neurology
	4	Endocrinology & Metabolism	Obstetrics and Gynecology	Endocrinology & Metabolism
	5	Critical Care Medicine	General Surgery	Orthopedic Surgery
	6	Vascular Surgery	Pediatrics	Anatomical Pathology
	7	Community Medicine	Orthopedic Surgery	Community Medicine
	8	Medical Genetics	Emergency Medicine	Gastroenterology
	9	Thoracic Surgery	FM - Emergency Medicine	F.M./Emergency Medicine
	10	Emergency Medicine	General Internal Medicine	Emergency Medicine

Yellow: - Appears on all three lists

Blue: - Appears on at least two lists