

TOUCHSTONE

INSTITUTE
COMPETENCY EVALUATION EXPERTS



Postgraduate Medical Education
UNIVERSITY OF TORONTO

January 27th 2016

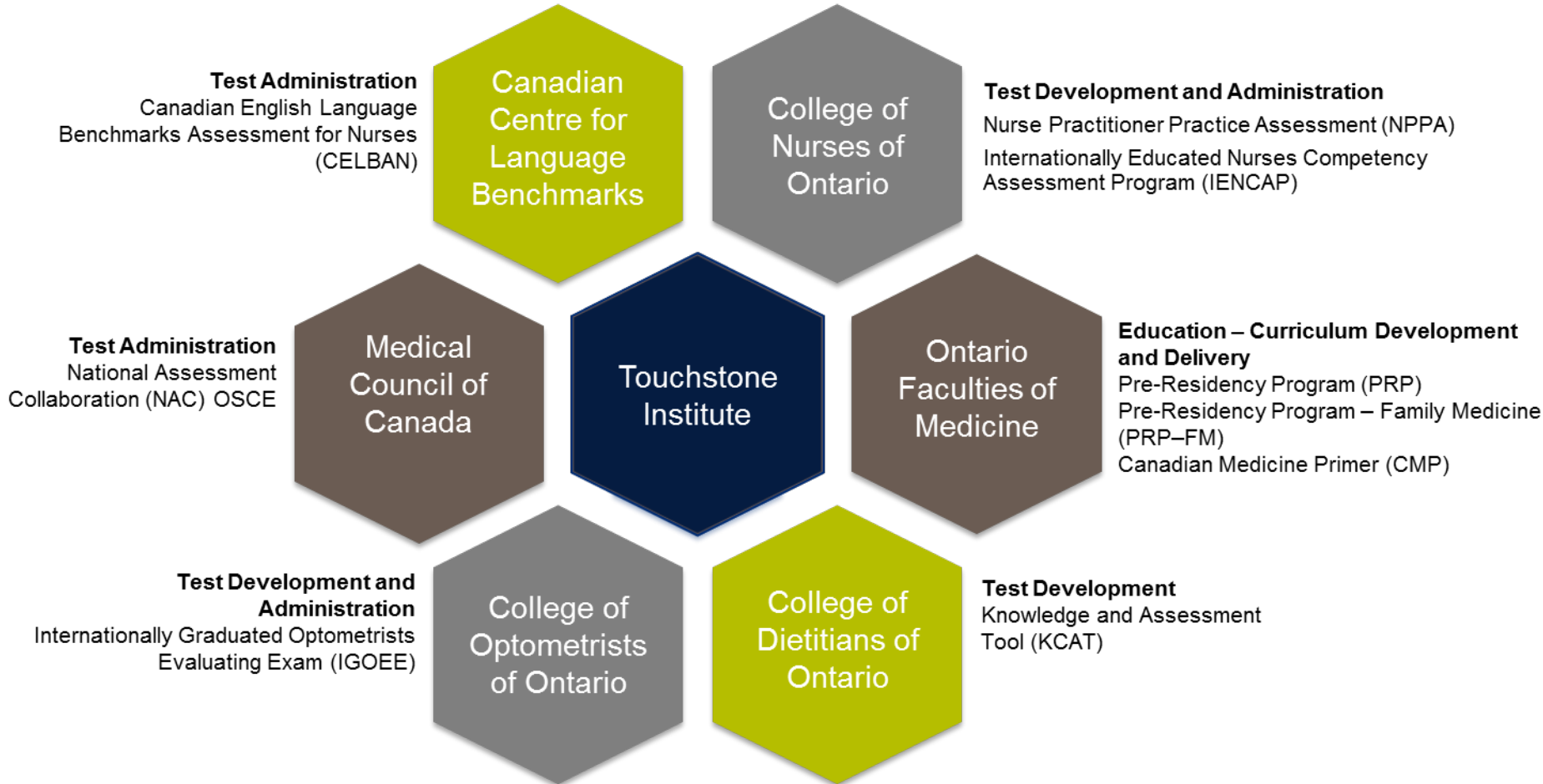
2015-16 PGME Administrators' Information Series

	Date	Start Time	Session Title	Target Audience	Location	Duration
9	Wednesday, January 27, 2016	9:00 AM	Touchstone	All	80 Bloor Street West, #902	2 hours
10	Thursday, February 11, 2016	8:30 AM	CPSO	All	Chestnut Conference Centre	2 hours
		10:30 AM	CBC, CBD and CanMEDS 2015	Program Admins		2 hours
11	Wednesday, March 23, 2016	11:30 AM	Royal College 101	All	Chestnut Conference Centre	2 hours
12	Wednesday, April 06, 2016	8:30 AM	Electives	All	Chestnut Conference Centre	2 hours
		10:30 AM	External Resources to help support the Resident	All		2 hours
13	Tuesday, May 10, 2016	8:30 AM	Supporting the Medical Education Administrator	All	Chestnut Conference Centre	3 hours
		10:30 AM	PARO-CAHO Contract	All		2.5 hours
14	Wednesday, May 25, 2016	11:00 AM	POWER: Preparing for the New Training Session	Program Admins - POWER Users	PGME, 6th Floor Boardroom	2 hours
15	Wednesday, June 01, 2016	11:00 AM	POWER: Preparing for the New Training Session	Program Admins - POWER Users	PGME, 6th Floor Boardroom	2 hours
16	Wednesday, June 15, 2016	12:00 PM	Year-End Appreciation Event	All	TBA	3 hours

as of January 25, 2015

Items of Discussion

- Introductions & Background
 - Touchstone Institute
 - University of Toronto
- Review Program Structure & Learning Methods
 - Pre-Residency Program (PRP/PRP-FM)
 - Canadian Medicine Primer (CMP)
- Review 2015 Enhancements
- Review 2016 Enhancements



Overview of Program Structure: Pre-Residency Program

Structure

- PRP Core
 - 2 Weeks of Blended & Experiential Programming applicable to ALL Specialties
 - Offered Four Times in the Year
- PRP-FM
 - 2 Weeks of additional Blended Experiential Programming for Family Medicine Residents
 - Offered Twice; April & August

Session Dates

-PRP1601

- Core: March 21st – April 5th
- FM: April 6th-15

-PRP1602

- Core: April 25th – May 6th

-PRP1603

- Core: May 24th – June 3rd

-PRP 1604

- Core: June 20th – 30th
- FM: August 8th – 19th

2015 PRP Demographics

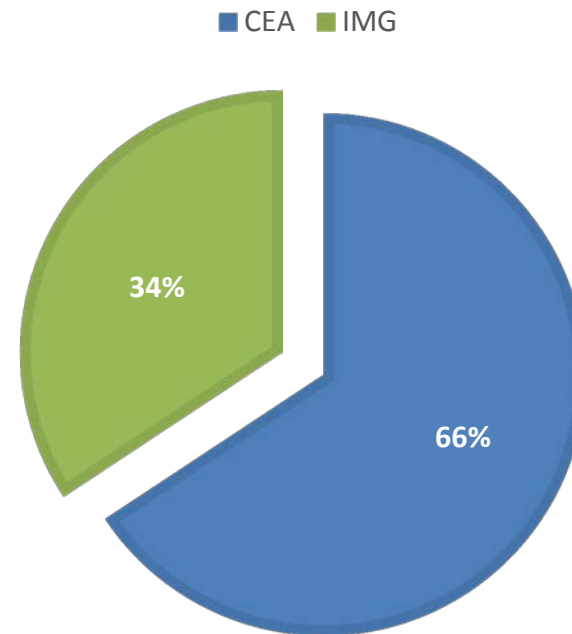
Top Countries of Study

- 1) Ireland
- 2) Australia
- 3) Iran
- 4) Grenada
- 5) UK

Top Programs of Study

- 1) Family Medicine
- 2) Internal Medicine
- 3) Psychiatry
- 4) Pediatrics
- 5) Diagnostic Radiology

IMG VS. CEA



Total Learners: 204

Canadians Educated Abroad: 134

International Medical Graduates: 70

Overview of Program Structure: Canadian Medicine Primer

This Year

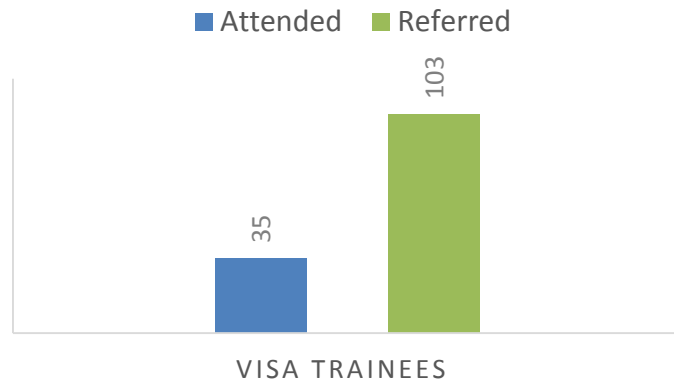
- Customized 3 Day Introductory Session
- Integrated Core and FM PRP Programming
- Tailored Sessions & Engagement for Clinical Fellows

Session Dates

- **CMP1601**
 - March 16th-April 5th
 - Optional FM: April 6th-15th
- **CMP1602**
 - April 20th – May 6th
- **CMP1603**
 - May 18th – June 3rd
- **CMP1604**
 - June 15th – June 30th
 - Optional FM: August 8th – 19th

2015 CMP Demographics

2015 REFERRALS



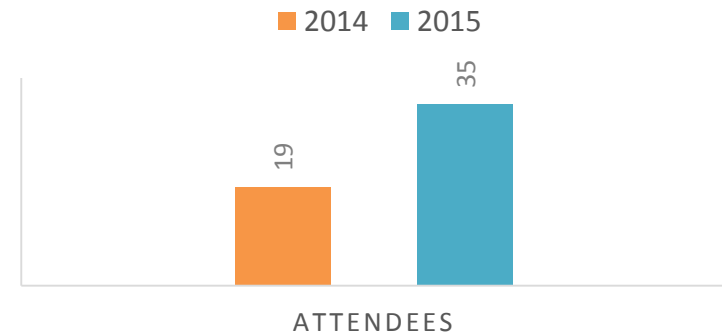
Top Programs of Study (Residents)

- 1) Medicine – Core - 19%
- 2) Internal Medicine – 15%
- 3) Family & Community Medicine – 11%

Top Country of Study (Residents)

- 1) Saudi Arabia – 56%
- 2) Kuwait – 11%
- 3) Ireland, Jordan, Oman – 7%

ATTENDANCE 2014 & 2015



Top Programs of Study (Fellows)

- 1) Hematology – 43%
- 2) Gastroenterology – 29%
- 3) Adult Critical Care, Neonatal-Perinatal Paediatrics – 14%

Top Country of Study

- 1) Saudi Arabia – 43%
- 2) Ireland, Kuwait, UAW – 14%

Program Structure & Curriculum

INTERACTIVE LECTURES LED BY PHYSICIANS

SMALL GROUP SESSIONS AND FEEDBACK WITH

- SIMULATED PATIENTS
- PHYSICIAN FACILITATORS

INTERACTIVE
LEARNING
SESSIONS

INTERACTIVE
ONLINE
MODULES

FLEXIBLE LEARNING MANAGEMENT SYSTEM

- 21 ONLINE MODULES
- SOME FACILITATED, OTHERS
SELF-DIRECTED
- ACCESSIBLE ANYWHERE
AND ANYTIME

CANADIAN PHYSICIANS WITH EXTENSIVE EDUCATIONAL EXPERIENCE AS:

- INSTRUCTORS
- ADVISORS
- CONSULTANTS
- FACILITATORS

PHYSICIAN-
LED AND
FACILITATED
PROGRAMS

INDIVIDUALIZED
SUPPORT

ACADEMIC ADVISING TO FOCUS ON INDIVIDUAL GOALS AND OBJECTIVES

PHYSICIANS TO PROVIDE INDIVIDUALIZED FEEDBACK ON

- KNOWLEDGE
- CLINICAL SKILLS
- COMMUNICATION
- SKILLS

Experiential Learning

Simulations provide opportunity to practise & receive feedback on communication, professionalism, patient management skills and medical expertise.

- **Large group simulations** recreate patient encounter in classroom setting.



Experiential Learning

Simulations provide opportunity to practise & receive feedback on communication, professionalism, patient management skills and medical expertise.

- **Small group simulations** allow participants to engage in patient encounter in a clinical examination room.



Evaluations

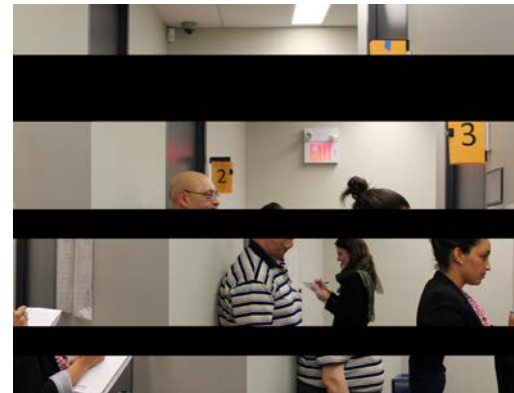


Goal is to provide learners with:

- Information on their strengths
- Opportunities to improve
- Resources in order to ensure readiness for residency in Ontario

Evaluations

- **Small Group Simulations:**
One-on-one patient encounter in clinical setting
- **Online Quizzes:** Based on key concepts from in-class material



Evaluations

- **Online Modules:** Complement in-class learning, participatory elements involved
- **Final Report:** Comprised of Simulation Scores, MCQ scores, online module completion and attendance

Unique Integration for Clinical Fellows

- Participate in simulations as supervisors, providing feedback to residents.
 - Receive formative feedback on their skills as a supervisor.
- Online resources allows participants to reflect on their experience, importance of feedback, principals associated with effective feedback

Unique Integration for Clinical Fellows

Participate in dedicated sessions to prepare them for providing feedback:

- Feedback Methods
- Evaluation forms within our PRP
- ITERs and Feedback Tools

Unique Integration for Clinical Fellows



Three stages of experiential learning:

First Stage: Observing the Resident

Second Stage: Observing the Facilitator

Third Stage: Providing Feedback to a Resident

Review of 2015 Enhancements



Pre-Residency Program

- Program Structure
- Harmonization of Content
- LMS Review
- Academic Advising Program
- Financial Wellness
- Resident As Teacher

Canadian Medicine Primer

- Introductory Sessions
- Program Structure
- Tailored Advising
- Clinical Fellow Integration
- Small Group Evaluation Form

Planned Enhancements for 2016

- Program Calendaring
 - 4 Core Offerings prior to July 1st
- Increased Stakeholder Engagement & Exposure
 - PGME Tour
 - Annual FM PD Meeting
 - CaRMS Orientation Day – FM
 - IMG & Visa Trainee Outreach
- Curricular Initiatives
 - No Skills Check
 - Feedback Form – CanMEDs 2015 Ready
 - First Nations & Rural Health
 - On Call & Emergency Skills
 - Resident Support Sessions
 - Online Learning System Overhaul – In Progress
 - T-OSCE Piloting



Perspectives on Communication Competency

TOUGHSTONE
INSTITUTE
COMPETENCY EVALUATION EXPERTS

ANNUAL
SYMPOSIUM

Explore the relationships, challenges and opportunities in communication competency and practical language skills for professional practice, with international experts from:

- Medical education
- Applied linguistics
- Health care practice
- Professional regulation

February 23, 2016
MaRS Collaboration Centre
Toronto, Canada

www.perspectives2016.com

Featured Presenters



Helen Angus Deputy Minister of Citizenship, Immigration and International Trade

Lorelei Lingard Founding Director, Centre for Education Research & Innovation (CERI), Schulich School of Medicine & Dentistry



Tim McNamara Professor, School of Languages and Linguistics, University of Melbourne

Susan Boshier Professor of English and Director of ESL, St. Catherine University



Michael Kaufman Medical Director of the OMA Physician Health Program



Panel Discussion

Featuring representatives from:

- Ontario Office of the Fairness Commissioner
- College of Midwives of Ontario
- Ontario College of Teachers
- University of Toronto
- Touchstone Institute

TOUGHSTONE
INSTITUTE
COMPETENCY EVALUATION EXPERTS

ANNUAL SYMPOSIUM